

decisivemoment.com
647 985 2351
chris@decisivemoment.com

DECISIVE MOMENT INCORPORATED

INTEGRATED
DESIGN
SOLUTIONS

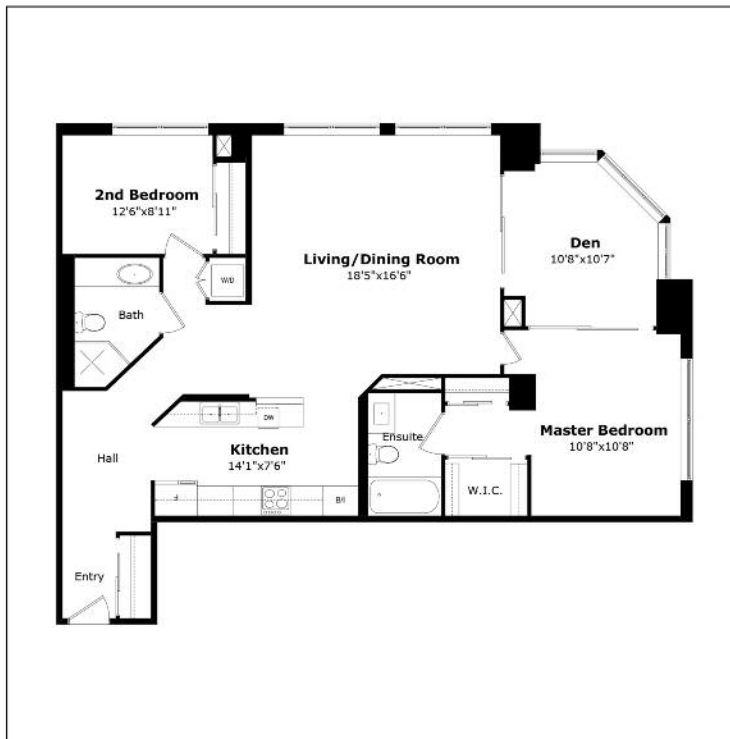
CLIENT 2111-24 Wellesley St. W., Toronto

PROJECT Space Planning

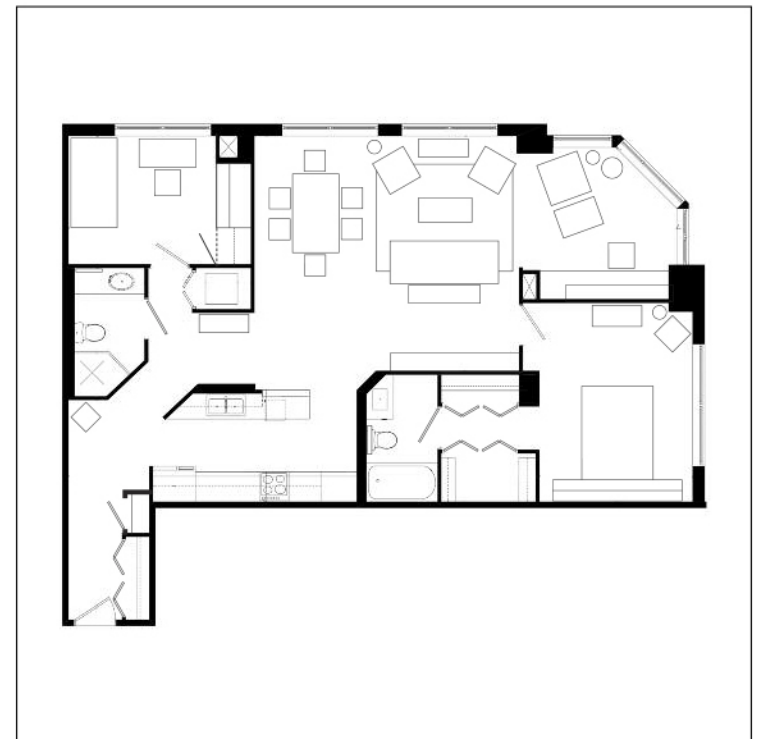
BRIEF Modification of a 1,250 sq/ft condominium to suit new owners downsizing requirements (reconfiguring of Entry Hall, Guest Room/Office, and Solarium/Den).

PRAISE *"My husband and I were downsizing. Our condo needed to be a welcoming home and provide efficient workspaces for two highly engaged professionals. Decisive Moment created a space that functions beautifully for both of us."*

Bonnie Campbell



BEFORE



AFTER